

Memory Types (left to right)

- Memories
- Skip Memories
- Limit Memories
- EAI Memories
- VFO
- Home
- Marine Memories
- SW Memories
- Weather Memories

Memory Channel Functions (left to right)

- Receive Frequency
- Tx Power
- Transmit Frequency
- Skip
- Offset Frequency
- Step
- Offset Direction
- Mask
- Operating Mode
- Attenuator
- Name
- S-Meter Squelch
- Show Name
- Bell
- Tone Mode
- Half Dev
- CTCSS
- Clock Shift
- DCS
- Bank 1 to 24
- DCS Polarity
- Comment
- User CTCSS

The ADMS-VX3 Programmer is designed to give you the ease and convenience of programming the memories and set menu options of your radio from your PC.

Memory Channels Include:

- 900 Memory Channels
- 99 Skip Memories
- 50 Limit Memories (25 pair)
- 1 EAI Memory
- 11 VFO Memories
- 11 Home Memories
- 88 Marine Memories
- 89 SW Memories
- 10 Weather Memories

Other Menu Item Categories Include:

- Common
- ARTS/CW/EAI
- Messages
- Sounds
- DTMF/Internet
- VFO and Menu Skip

The Programmer Is for so Much More than Just Memory Management.

With the ADMS-VX3 Programmer you can begin a new “factory fresh” file into which frequencies and option settings are entered. Or, you can read from the radio, store these details on your computer and make changes. Then, with minimal button pushing, send the new configuration back to the radio.

The Programmer allows you to create and save as many files as you want for your radio. Files can even be shared between users via email or the Internet. Any RT Systems Version 4.50 program can open a file from any other RT Systems Version 4.50 programmer... even from a different radio.

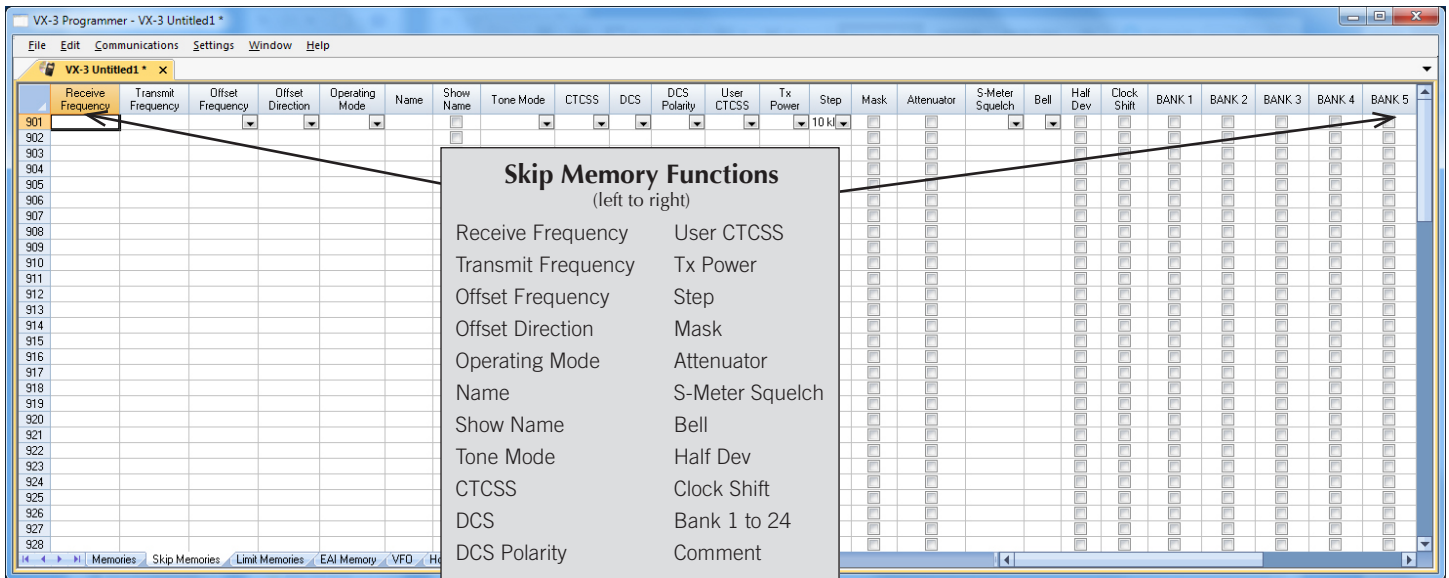
Managing all the options of this great little radio becomes easy with the Programmer. The cut, copy, paste and insert features of the Programmer make channel management easier than ever.

Open more than one file at a time. Memory channel information can be copied from one file to another within the Programmer making it really easy to set up a new file.



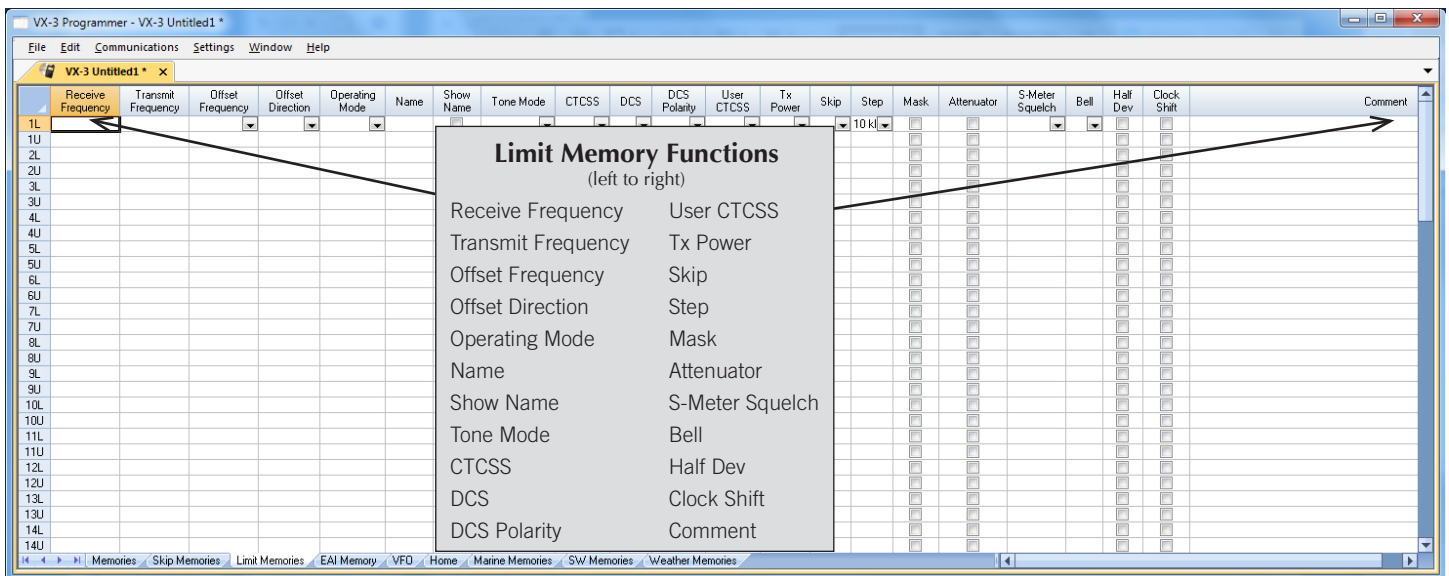
Hardware Requirements:

A PC running Windows XP, Vista, Windows 7 (32 or 64 bit) or Windows 8 (full version). A CD drive (local or network) for installation. A free USB port. The RT Systems USB-57A interface cable. The cable connects the radio to the computer from the USB port on the computer to the speaker/mic jack on the radio.



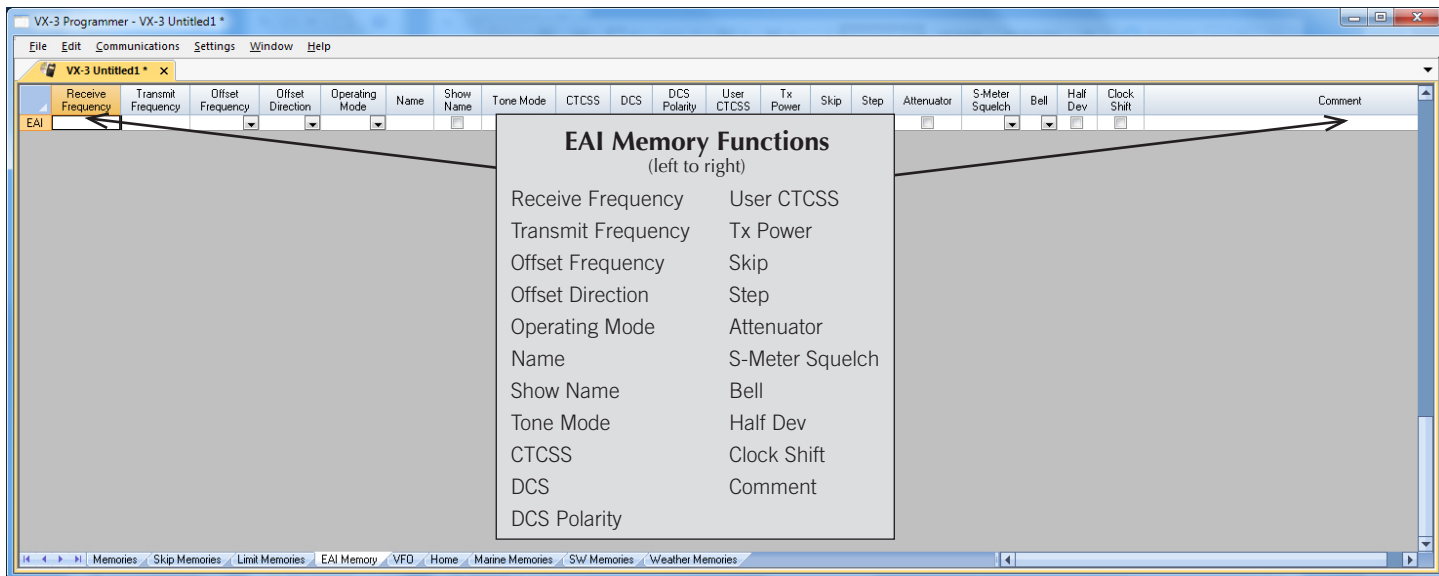
Skip Memories

These frequencies are skipped during VFO scanning. These channels can be used for additional regular memory storage if you don't use VFO scanning.



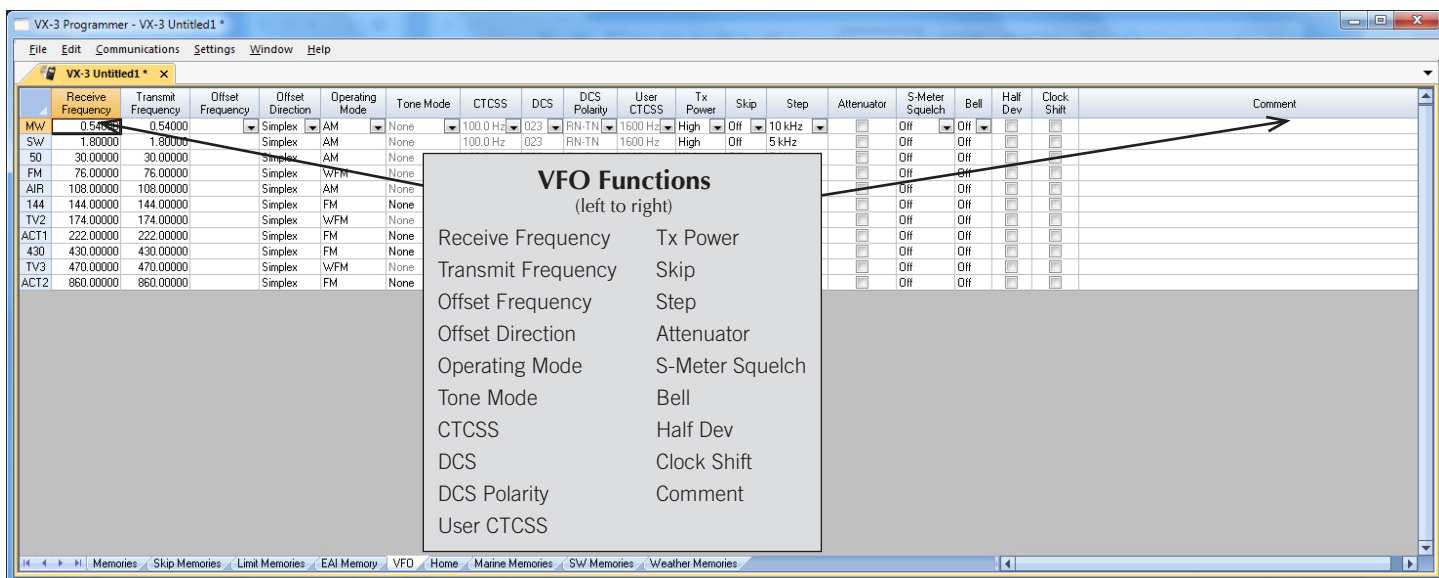
Limit Memories

Limit Memories are used by the radio for Program Scan. Program the same details for Limit Memories as for regular memory channels. Many of the Limit Memories are preprogrammed in the radio and while the frequency can be changed to another within the band, they cannot be left blank.



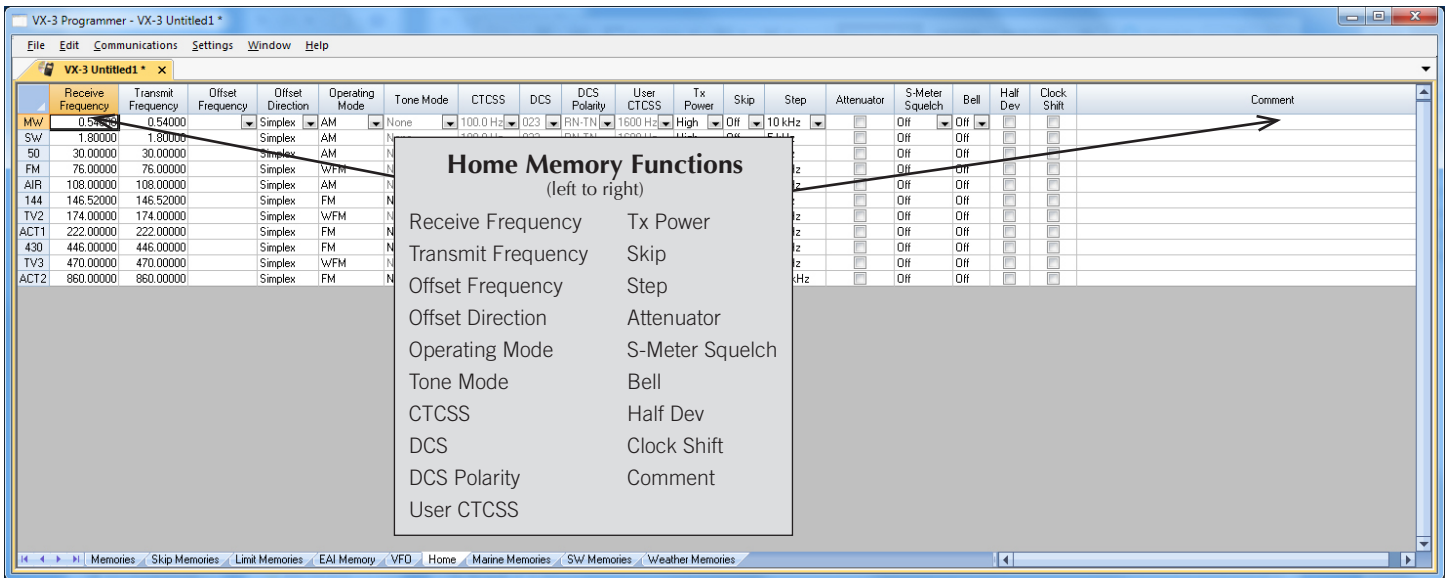
EAI Memory

Program the frequency to use with the Emergency Automatic Identification feature.



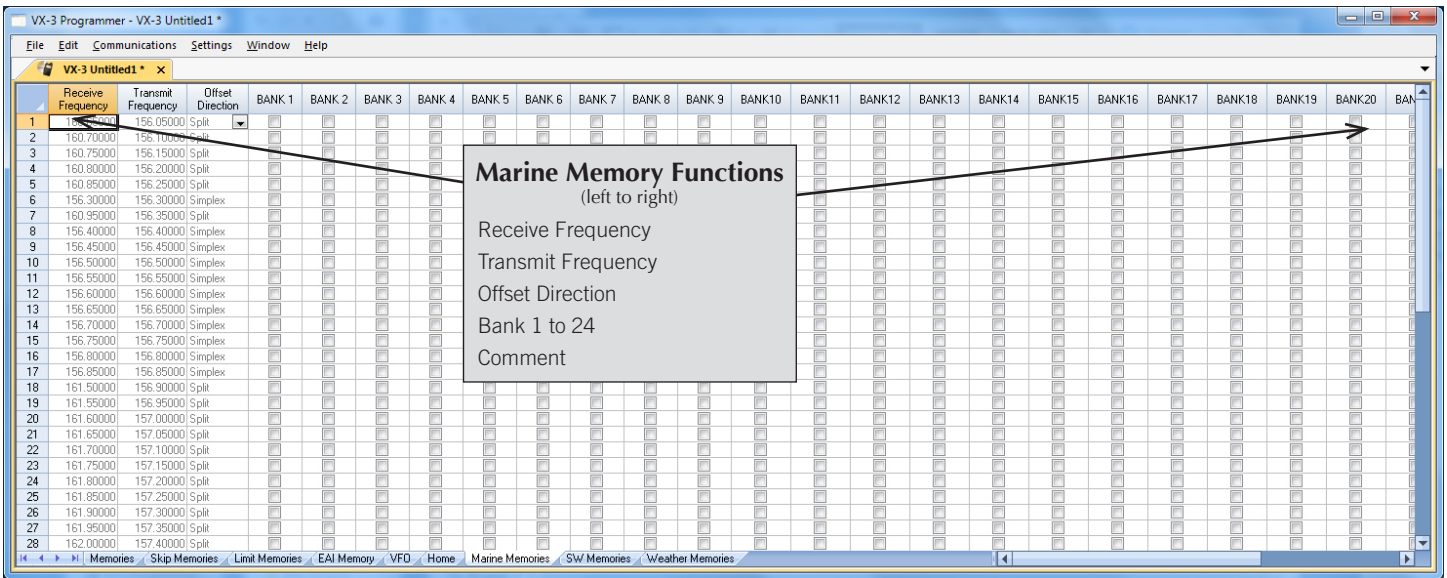
VFO

The program makes available the same VFO's as in the radio (usually one per band). Remember these are not real memory channels since the details are lost as soon as you tune the radio manually. There is no one button recall for these. You do not need to program into VFO before programming details into a memory channel. These channels are preprogrammed in the radio and while the frequency can be changed to another within the band, they cannot be left blank.



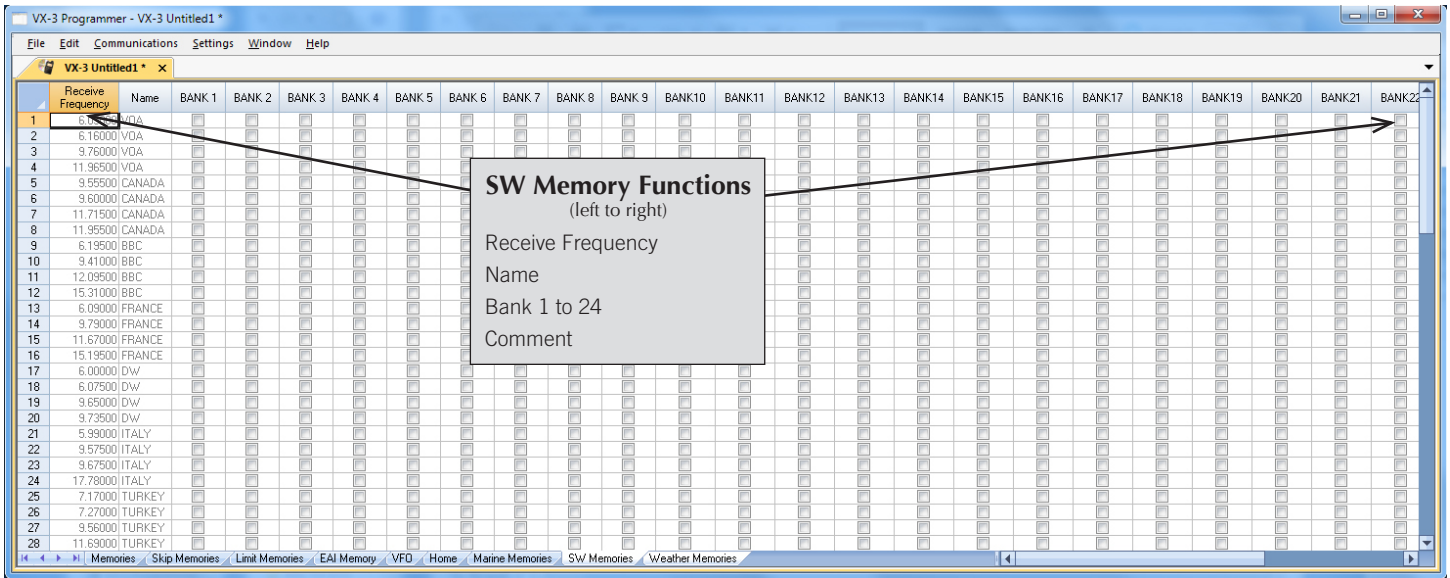
Home

Home/Call channels are special memories accessed through one button recall on the radio. These channels are preprogrammed in the radio and while the frequency can be changed to another within the band, they cannot be left blank.



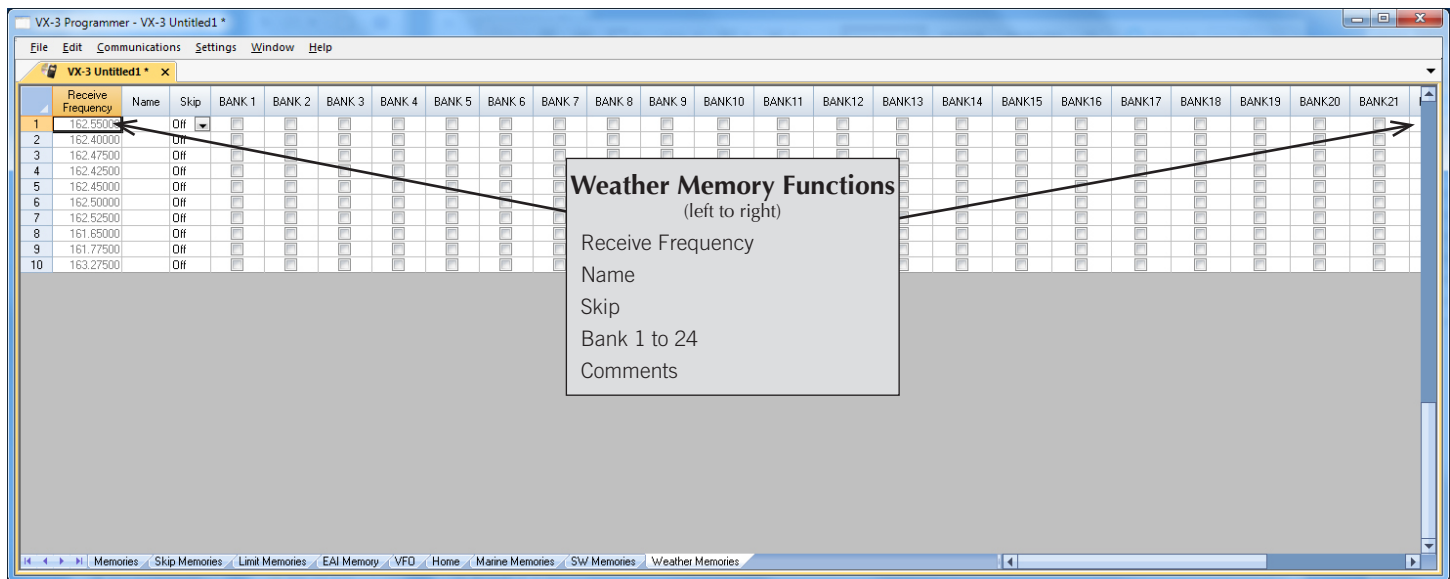
Marine Memories

Pre-programmed in the radio, the Marine Memories cannot be changed. Receive frequency, Transmit frequency and Offset direction are disabled to prevent editing. These channels can be included with other memories in Banks 1 - 24 by checking the box for that Bank.



SW Memories

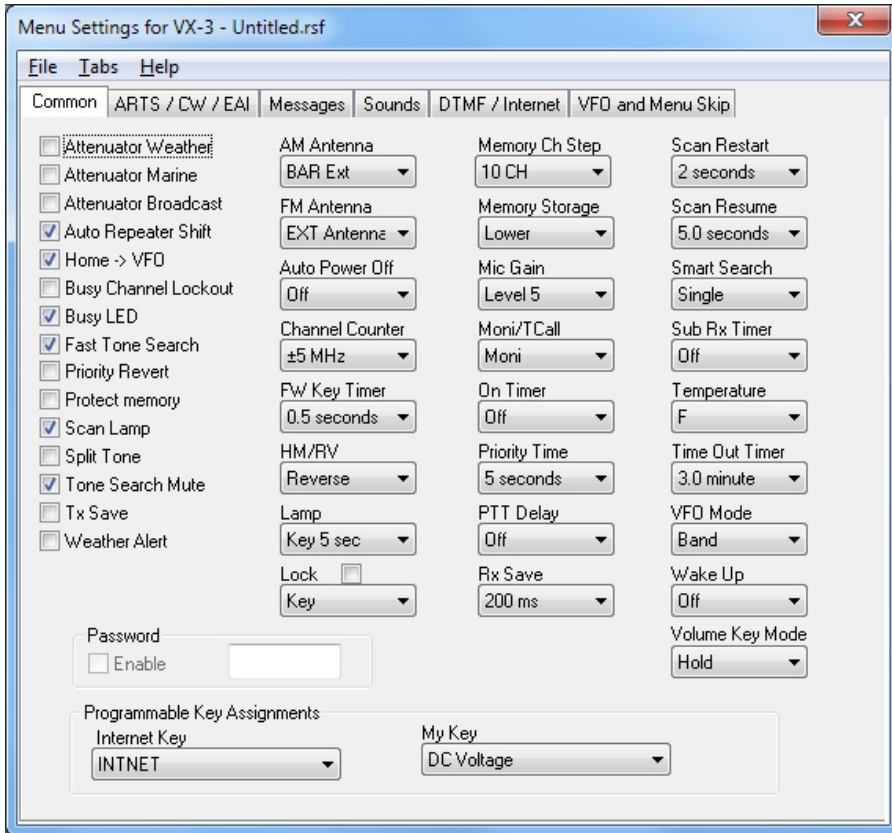
Frequencies for shortwave listening are preprogrammed in the radio with a name identifier and cannot be changed. Receive frequency and Name are disabled to prevent editing. These channels can be included with other memories in Banks 1-24 by checking the box for that Bank.



Weather Memories

Ten NOAA weather frequencies are preprogrammed in the radio, and cannot be changed. Use this screen to edit Name, set Skip conditions and add a weather channel to a bank along with other memories.

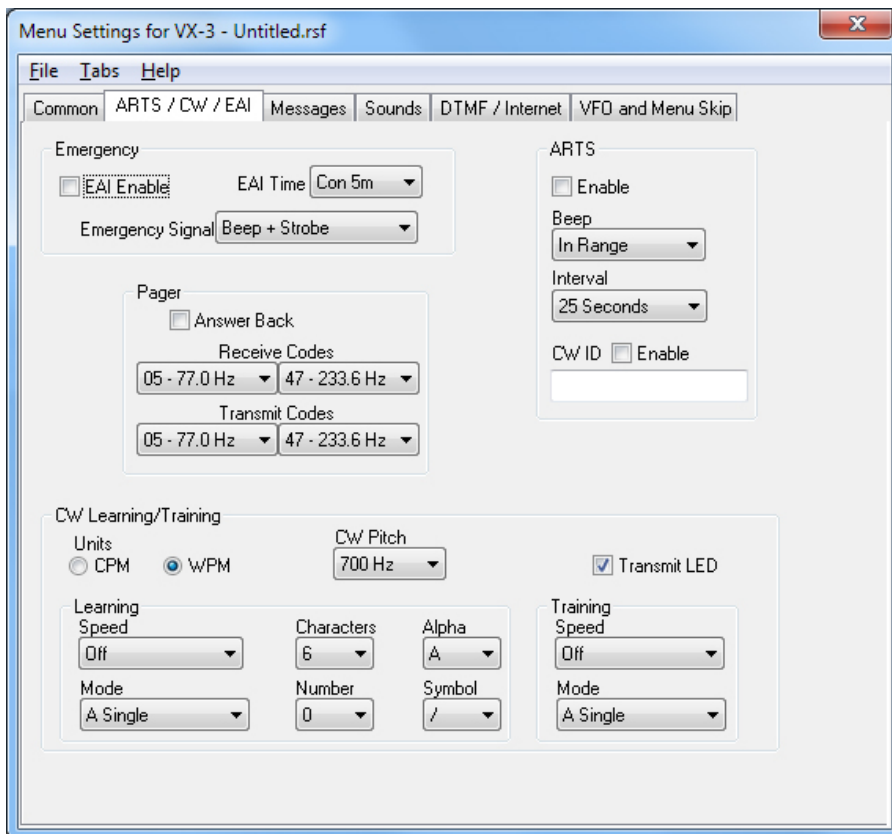
[Buy Now](#)



Common

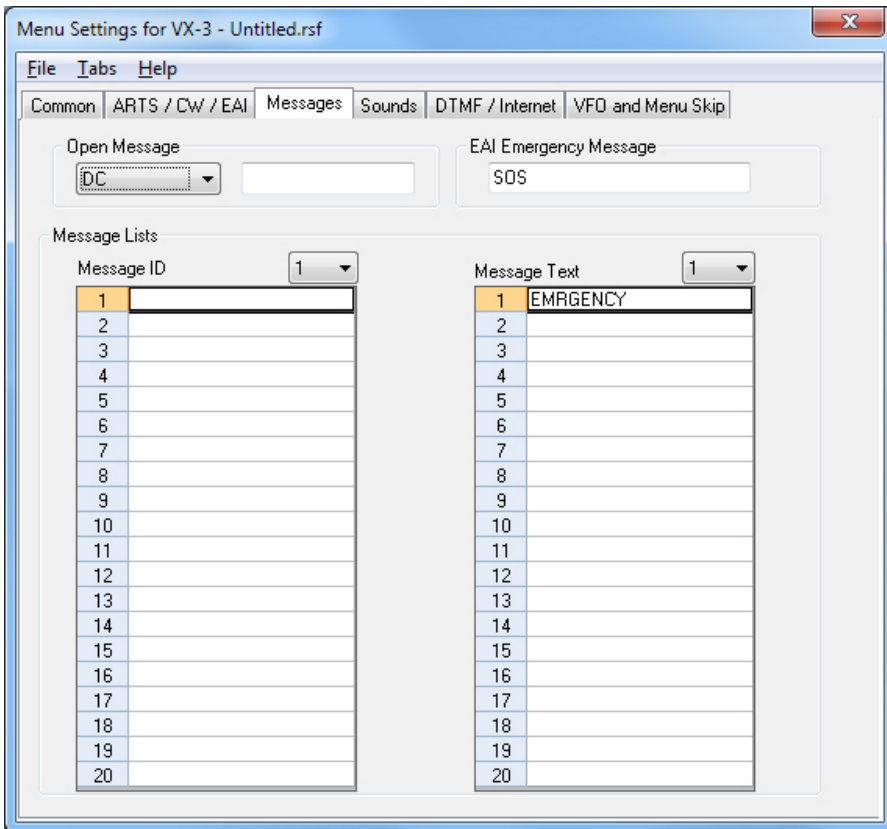
Use these screens to customize other set menu features of the radio. Check boxes toggle features on or off, drop down menus list all selections and blank boxes for personalized entry add to the ease of setting up your radio exactly like you want it.

The entries on the Settings screens are made for you to “Set and Forget”. Once settings are customized, you are prompted to save before exiting. The saved settings will be there every time you create a new frequency file.



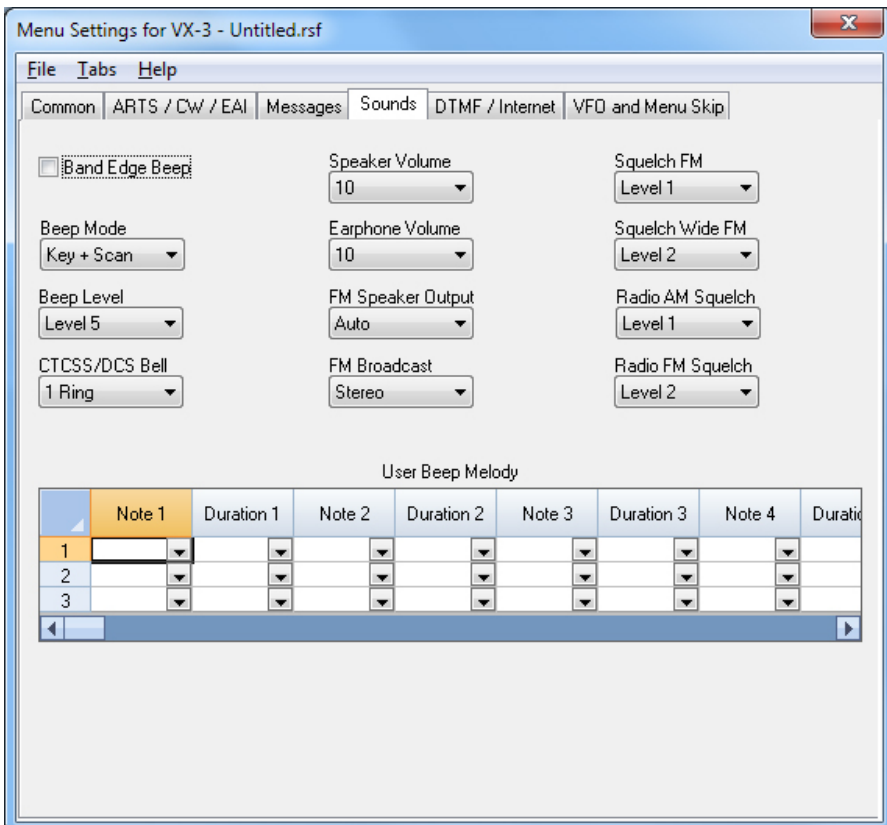
ARTS/CW/EAI

Use these settings to adjust the ARTS, CW and EAI menu items of the radio.



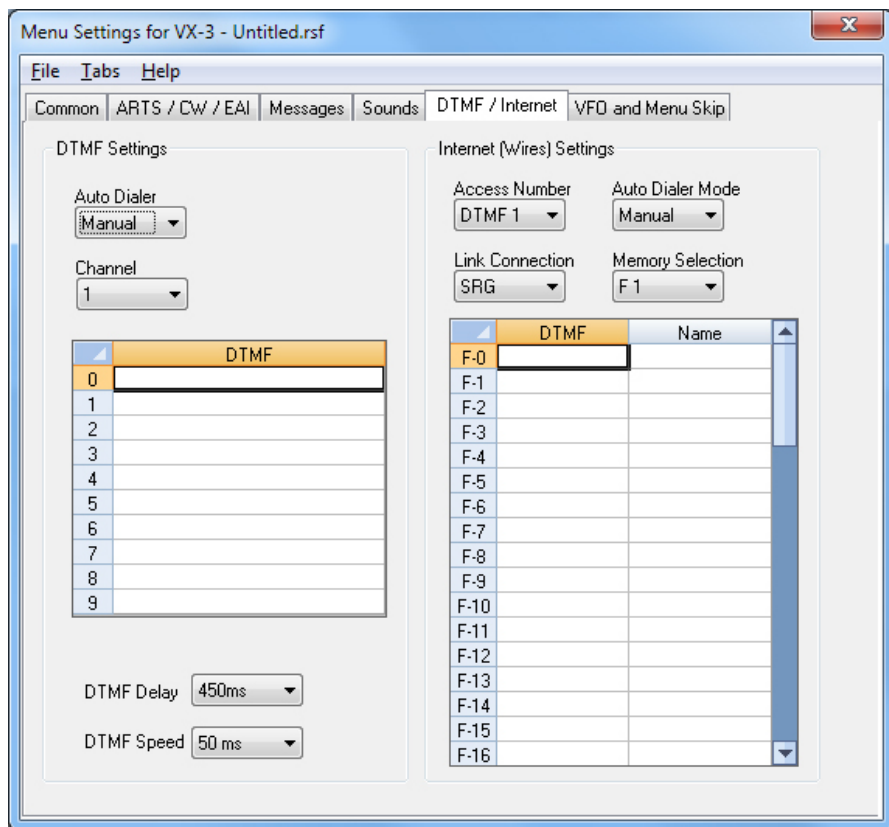
Messages

Set options for the Opening Message and text message details.



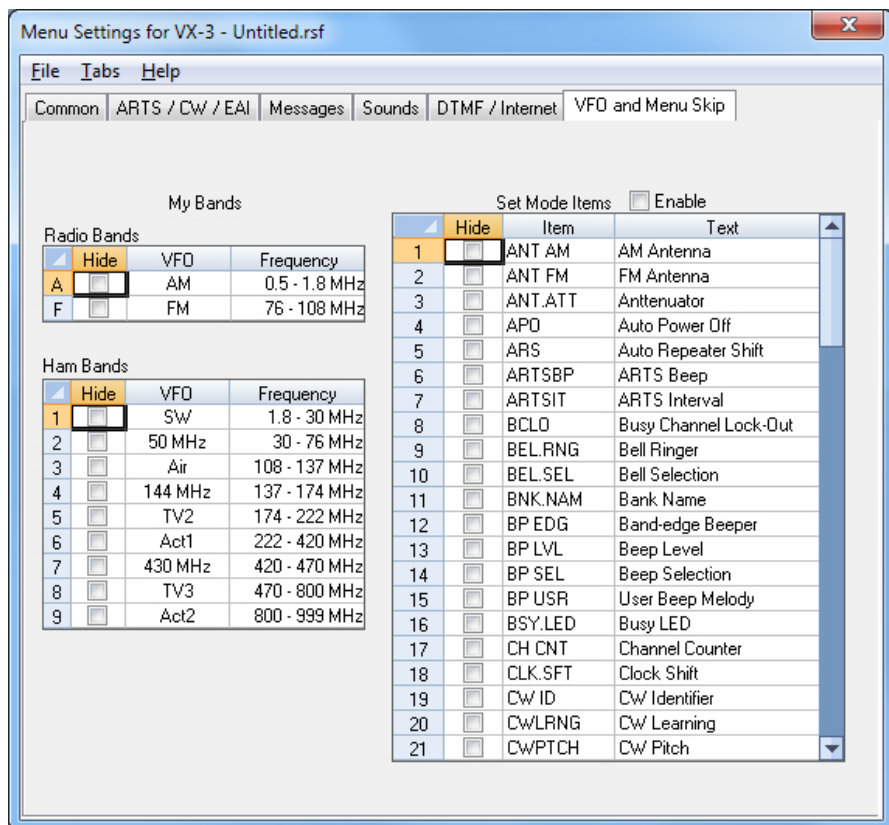
Sounds

Customize radio sounds including the notes for a User Beep Melody that sounds when User Beep is engaged for Tone Mode on a memory channel.



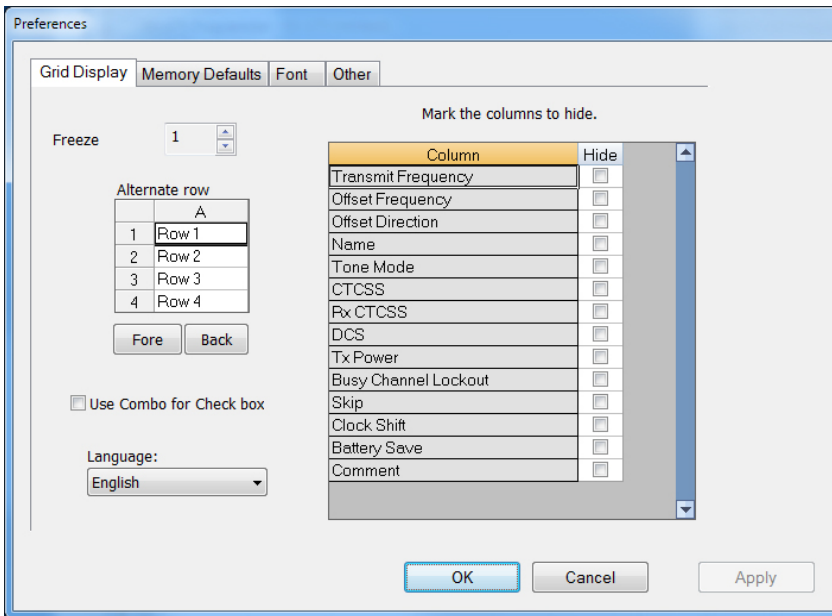
DTMF/Internet

Enter DTMF and Internet (wires) memory details to customize options for the functions of the radio.



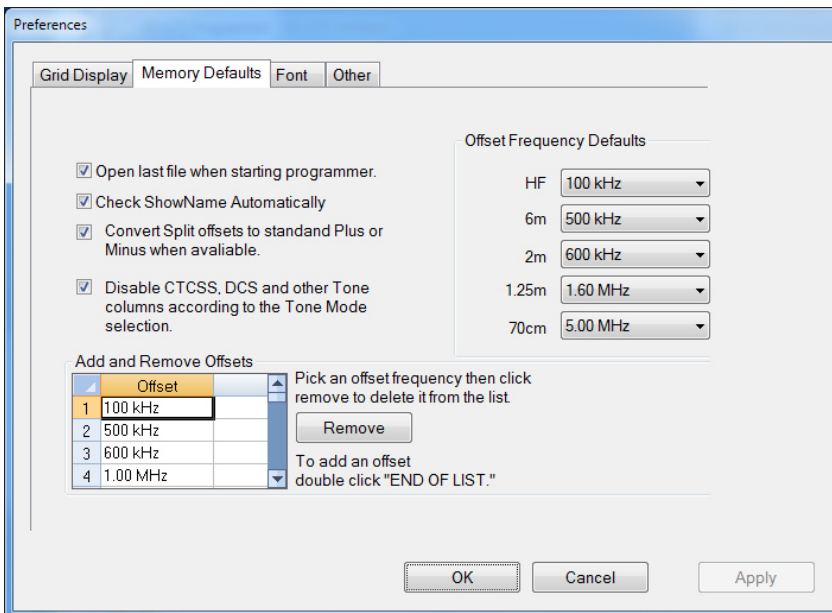
VFO and Menu Skip

Limit access to little used Bands in VFO and Hide menu options to make using the radio simpler.



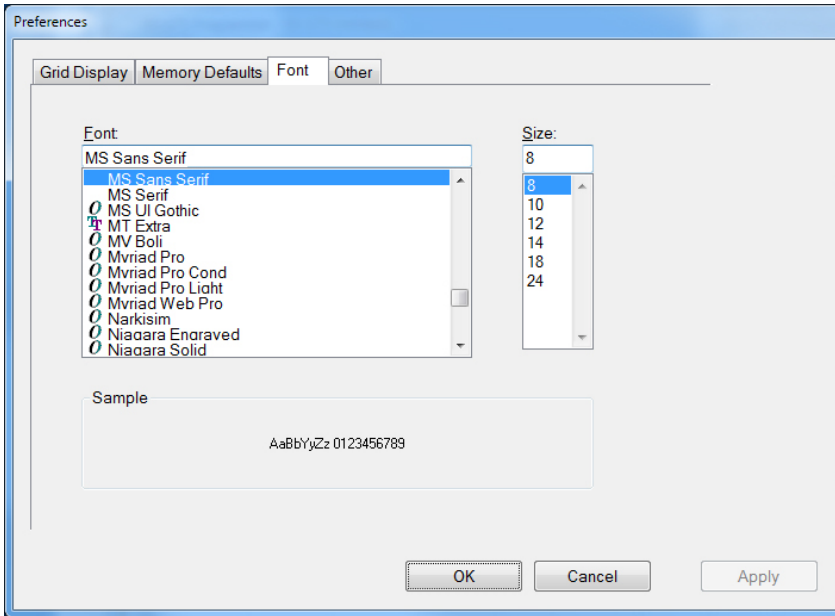
Grid Display

- RT Systems now available in English, French, German, Italian, Spanish, Portuguese and Japanese.
- Set colors for text (Fore) or background (Back) of alternate rows for easier viewing across the columns.
- Freeze columns to keep information on the screen as you scroll to the right of the page.
- Hide columns you don't use. Customize your print-out: hidden columns do not print.
- Use Combo for Check boxes – changes the grid to eliminate check box selections that are disabled on some systems.



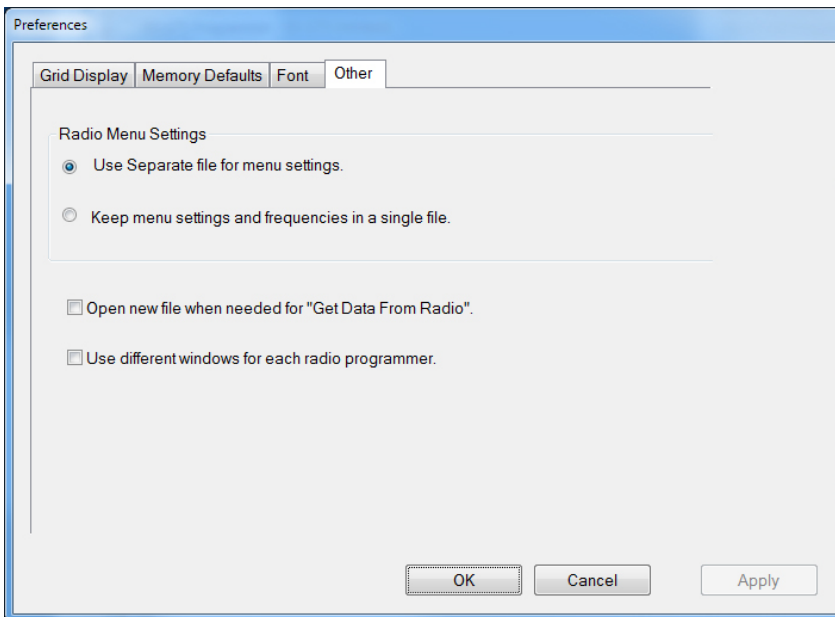
Memory Defaults

- Set options to control auto fill information for memory channel entries.



Font

- Set options to control the font in the column headers of the channel entry screens. Select any font and font size available on your computer.



Other

- Set options to control how the programmer handles the global Radio Menu Settings file.
 - Separate (default) handles the global settings of the radio in a “set and forget” fashion. Once you set these up and save the file you won’t have to reset them for a new frequency file.
 - Together as one gives you the ability to create files that are complete with frequencies and customized global settings. In this mode, each file begins with factory defaults for every option of the radio.
- Check “Get data from Radio” new file option to prevent data loss when you read from your radio into the programmer.
- Check “different window” option to make the programmer for a different radio run in completely separate window rather than in a separate tab of the same window.

[Buy Now](#)